

Rubber stop buffer

Buffers for end stops / Cranes and conveyor systems

Order number

017xxx-xxxY



Contents

| | Page |
|---|------|
| 1 General information | 2 |
| 2 Examples of application | 2 |
| 3 Conductix-Wampfler standard rubber quality | 3 |
| 4 Quality degrees of the most popular materials | 3 |
| 5 Dimensional tables | 4 |
| 5.1 Construction with steel base plate | 4 |
| 5.2 Construction with threaded bolt | 5 |
| 5.3 Construction with two threaded bolts | 5 |
| 5.4 Wheel buffers with fixing holes or thread | 6 |
| 5.5 Conical rubber buffers with threaded bolts | 7 |
| 5.6 Conical rubber buffers with fixing hole | 8 |
| 5.7 Conical rubber buffers with internal thread | 9 |
| 6 Example of order details | 10 |

Quantity delivered:

Deviations from the order may occur on order-related manufacture and material cut. We reserve the right for a max. deviation of $\pm 10\%$.

Rubber stop buffer

Buffers for end stops / Cranes and conveyor systems

1 General information

Maximum elasticity and tensile strength are the characteristics of natural caoutchouc vulcanisates. Their properties are a strong notched-bar tenacity and high abrasion resistance. Their mechanical and dynamical load are the highest among all elastomers. Natural caoutchouc is resistant to polar liquids, aliphatic, aromatic and chlorinated hydrocarbons.

Oil and natural gas are the basic materials for composition caoutchouc. Previously a substitution material for natural caoutchouc, composition caoutchouc is being used in many fields of application now. Today there is a wide spectrum of composition caoutchouc, their properties allowing a wide range of applications that helped the rubber material to reach its position in modern technology. Moreover rubber is not a merely chemical substance, but a composite of very different substances. The various resistances and mechanical properties can only be realized from a formula of several hundred substances. Caoutchouc as a macro-molecular material is the elastic component of the rubber. Mechanical properties such as breaking elongation, rebound elasticity, strength, resistance against tear propagation are determined by this component.

The compound of chemicals and aggregates with the rubber and the subsequent vulcanisation process produce a useable material. A multitude of possible combinations of individual materials as well as the various possible fixations provide an appropriate solution for each problem.

The steel plates on rubber buffers are vulcanized into or onto the buffers. The threaded bolts on rubber buffers are inserted without the risk of getting twisted. Visible surfaces are primed respectively galvanized. The vulcanisation process guarantees maximum stability between rubber and steel.

2 Examples of application

- Crane systems
- Storage and retrieval machines
- Smelter and rolling mill machines
- Handling technique
- Plant construction and engineering
- Conveyor, transport and gate systems
- etc.

Rubber stop buffer

Buffers for end stops / Cranes and conveyor systems

3 Conductix-Wampfler standard rubber quality

N-Quality

- Resilient and tear resistant
- Age resistant
- Material incompressible
- Operating temperature: -30 to +70°C
- Hardness: 70 Shore A +/-3

S-Quality (only on inquiry)

- Seawater and ozone resistant, weather-proof, oil and to a large extent acid and age resistant
- Operating temperature: -30 to +80°C
- Hardness: 70 Shore A +/-3

Special qualities and special constructions on inquiry!

4 Quality degrees of the most popular materials

| International Abbreviated designation | NR Natural caoutchouc | CR Chloroprene caoutchouc | SBR Styrene-Butadiene caoutchouc | EPDM Ethylene-Propylene terpolymere | NBR Nitrile-Butadiene caoutchouc | VMQ Silicone caoutchouc |
|---------------------------------------|--------------------------|------------------------------|-------------------------------------|--|-------------------------------------|----------------------------|
| Abrasion resistance | 2 | 2 | 2 | 3 | 2 | 5 |
| Breaking elongation | 1 | 2 | 2 | 3 | 2 | 4 |
| Tear resistance | 2 | 2 | 3 | 3 | 3 | 6 |
| Rebound resistance | 2 | 3 | 3 | 3 | 3 | 3 |
| Tensile strength not reinforced | 1 | 3 | 5 | 5 | 5 | 6 |
| Tensile strength reinforced | 1 | 2 | 2 | 3 | 2 | 4 |
| Temp. resistance hot air | +90°C | +120°C | +100°C | +150°C | +130°C | +200°C |
| Temp. resistance coldness | -50°C | -30°C | -40°C | -40°C | -40°C | -80°C |
| Alkali resistance | 3 | 2 | 3 | 2 | 3 | 5 |
| Age resistance | 3 | 2 | 3 | 1 | 3 | 1 |
| Gasoline resistance | 6 | 2 | 4 | 5 | 1 | 5 |
| Electrical insulation resistance | 1 | 3 | 2 | 2 | 4 | 1 |
| Oil and grease resistance | 6 | 2 | 5 | 4 | 1 | 1 |
| Ozone resistance | 4 | 2 | 4 | 1 | 3 | 1 |
| Acid resistance | 3 | 2 | 3 | 1 | 4 | 5 |
| Hot water | 3 | 3 | 2 | 2 | 3 | 5 |

Quality degrees of the individual materials' properties:

1 = very good; 2 = good; 3 = satisfying; 4 = sufficient; 5 = deficient; 6 = insufficient

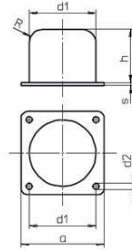
Tolerances of the rubber parts according to ISO 3302-1M

Rubber stop buffer

Buffers for end stops / Cranes and conveyor systems

5 Dimensional tables

5.1 Construction with steel base plate



| Order number | W_{max} [J] | F [kN] | Weight [kg] | d_1 [mm] | h [mm] | a [mm] | d_2 [mm] | R [mm] | s [mm] | PE ¹⁾ [pc.] | LZ ²⁾ |
|------------------------------|------------------|-----------|----------------|---------------|-----------|-----------|---------------|-----------|-----------|---------------------------|------------------|
| 017110-040x032 ¹⁾ | 57,5 | 9 | 0,09 | 40 | 35 | 50 | 5,5 | - | 2 | 1 | L |
| 017110-050x040 ¹⁾ | 90 | 13 | 0,17 | 50 | 43 | 63 | 6,5 | - | 2 | 1 | L |
| 017110-063x050 ¹⁾ | 200 | 25 | 0,36 | 63 | 54 | 80 | 6,5 | - | 3 | 1 | L |
| 017111-080N | 400 | 40 | 0,88 | 80 | 63 | 100 | 11 | 16 | 6 | 1 | L |
| 017111-100N | 800 | 63 | 1,82 | 100 | 80 | 125 | 13 | 20 | 6 | 1 | L |
| 017111-125N | 1600 | 100 | 3,25 | 125 | 100 | 160 | 17 | 25 | 6 | 1 | L |
| 017111-160N | 3200 | 160 | 6,50 | 160 | 125 | 200 | 17 | 32 | 8 | 1 | L |
| 017111-200N | 6300 | 250 | 11,30 | 200 | 160 | 250 | 21 | 40 | 8 | 1 | L |
| 017111-250N | 12500 | 400 | 22,60 | 250 | 200 | 315 | 21 | 50 | 10 | 1 | L |
| 017111-315N | 25000 | 630 | 41,20 | 315 | 250 | 400 | 21 | 63 | 10 | 1 | L |

¹⁾ = packing unit = minimum order quantity

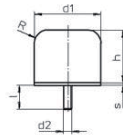
²⁾ = delivery time; L = on stock, 1 = one week, 2 = two weeks, a.s.o.

Conical form, see drawing rubber buffers chapter 5.5

Rubber stop buffer

Buffers for end stops / Cranes and conveyor systems

5.2 Construction with threaded bolt

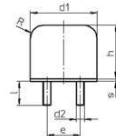


| Order number | W _{max} [J] | F [kN] | Weight [kg] | d ₁ [mm] | h [mm] | d ₂ | l [mm] | R [mm] | s [mm] | PE ¹⁾ [pc.] | LZ ²⁾ |
|--------------|-------------------------|-----------|----------------|------------------------|-----------|----------------|-----------|-----------|-----------|---------------------------|------------------|
| 017120-080N | 400 | 40 | 0,6 | 80 | 63 | M12 | 37 | 16 | 3 | 1 | L |
| 017120-100N | 800 | 63 | 1,1 | 100 | 80 | M12 | 36 | 20 | 4 | 1 | L |
| 017120-125N | 1600 | 100 | 2,1 | 125 | 100 | M16 | 46 | 25 | 4 | 1 | L |
| 017120-160N | 3200 | 160 | 4,4 | 160 | 125 | M16 | 44 | 32 | 6 | 1 | L |
| 017120-200N | 6300 | 250 | 8,4 | 200 | 160 | M20 | 49 | 40 | 6 | 1 | L |
| 017120-250N | 12500 | 400 | 16,3 | 250 | 200 | M20 | 47 | 50 | 8 | 1 | L |

¹⁾ = packing unit = minimum order quantity

²⁾ = delivery time; L = on stock, 1 = one week, 2 = two weeks, a.s.o.

5.3 Construction with two threaded bolts



| Order number | W _{max} [J] | F [kN] | Weight [kg] | d ₁ [mm] | h [mm] | d ₂ | e [mm] | l [mm] | R [mm] | s [mm] | PE ¹⁾ [pc.] | LZ ²⁾ |
|--------------|-------------------------|-----------|----------------|------------------------|-----------|----------------|-----------|-----------|-----------|-----------|---------------------------|------------------|
| 017121-100N | 800 | 63 | 1,2 | 100 | 80 | M12 | 50 | 36 | 20 | 4 | 1 | L |
| 017121-125N | 1600 | 100 | 2,2 | 125 | 100 | M16 | 63 | 46 | 25 | 4 | 1 | L |

Other dimensions available on inquiry!

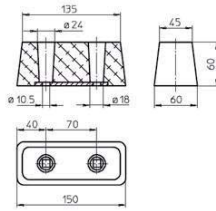
¹⁾ = packing unit = minimum order quantity

²⁾ = delivery time; L = on stock, 1 = one week, 2 = two weeks, a.s.o.

Rubber stop buffer

Buffers for end stops / Cranes and conveyor systems

5.4 Wheel buffers with fixing holes or thread

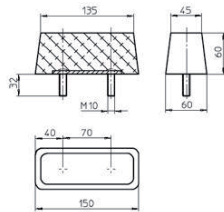


Order number: 017131-060x150P

Technical details

- Weight: 0,65 kg
- Energy W_{max} : 550 J
- Force F: 50 kN

PE¹⁾ = 10 St.; LZ²⁾ = L



Order number: 017132-060x150

Technical details

- Weight: 0,77 kg
- Energy W_{max} : 1000 J
- Force F: 100 kN

PE¹⁾ = 10 St.; LZ²⁾ = L

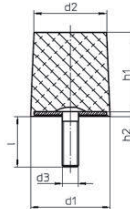
¹⁾ = packing unit = minimum order quantity

²⁾ = delivery time; L = on stock, 1 = one week, 2 = two weeks, a.s.o.

Rubber stop buffer

Buffers for end stops / Cranes and conveyor systems

5.5 Conical rubber buffers with threaded bolts



| Order number | W _{max} [J] | F [kN] | Weight [kg] | d ₁ [mm] | d ₂ [mm] | d ₃ [mm] | h ₁ [mm] | h ₂ [mm] | l [mm] | PE ¹⁾ [pc.] | LZ ²⁾ |
|------------------|-------------------------|-----------|----------------|------------------------|------------------------|------------------------|------------------------|------------------------|-----------|---------------------------|------------------|
| 017220-016X006,3 | 1,2 | 0,9 | 0,008 | 16 | 15,5 | M5 | 6,3 | 0,5 | 20 | 1 | L |
| 017220-016X008 | 1,5 | 0,9 | 0,009 | | 15,0 | | 8 | | | 125 | 4 |
| 017220-016X010 | 1,8 | 0,9 | 0,010 | | 15,0 | | 10 | | | 1 | L |
| 017220-016X012,5 | 2,2 | 0,9 | 0,011 | | 14,5 | | 12,5 | | | 125 | 4 |
| 017220-016X016 | 2,8 | 0,9 | 0,012 | 20 | 14,0 | M6 | 16 | 0,6 | 25 | 1 | L |
| 017220-020X008 | 2,5 | 1,8 | 0,013 | | 19,5 | | 8 | | | 1 | L |
| 017220-020X010 | 3,0 | 1,65 | 0,016 | | 19,0 | | 10 | | | 100 | 4 |
| 017220-020X012,5 | 3,8 | 1,5 | 0,019 | | 18,5 | | 12,5 | | | 1 | L |
| 017220-020X016 | 4,8 | 1,4 | 0,021 | 25 | 18,0 | M6 | 16 | 0,6 | 25 | 100 | 4 |
| 017220-020X020 | 6,0 | 1,35 | 0,023 | | 17,5 | | 20 | | | 1 | L |
| 017220-025X010 | 7,0 | 4,6 | 0,025 | | 24,0 | | 10 | | | 1 | L |
| 017220-025X012,5 | 8,0 | 4,0 | 0,027 | | 23,5 | | 12,5 | | | 100 | 4 |
| 017220-025X016 | 10,0 | 3,5 | 0,029 | 25 | 23,0 | M6 | 16 | 0,6 | 25 | 1 | L |
| 017220-025X020 | 12,0 | 3,2 | 0,031 | | 22,5 | | 20 | | | 100 | 4 |
| 017220-025X025 | 15,0 | 3,0 | 0,034 | | 22,0 | | 25 | | | 1 | L |
| 017220-032X012,5 | 22,5 | 12,5 | 0,046 | | 32 | | 31,5 | | | M8 | 12,5 |
| 017220-032X016 | 23,0 | 8,8 | 0,049 | 30,0 | | 16 | 100 | 4 | | | |
| 017220-032X020 | 24,0 | 7,0 | 0,053 | 29,5 | | 20 | 1 | L | | | |
| 017220-032X025 | 25,5 | 5,8 | 0,057 | 29,0 | | 25 | 100 | 4 | | | |
| 017220-032X032 | 27,5 | 5,0 | 0,064 | 40 | 28,5 | M8 | 32 | 2,8 | 28 | 1 | L |
| 017220-040X016 | 51,0 | 17,5 | 0,069 | | 38,0 | | 16 | | | 1 | L |
| 017220-040X020 | 53,0 | 13,5 | 0,075 | | 37,5 | | 20 | | | 100 | 4 |
| 017220-040X025 | 55,0 | 11,0 | 0,082 | | 37,0 | | 25 | | | 100 | 4 |
| 017220-040X032 | 57,5 | 9,0 | 0,090 | 50 | 36,5 | M10 | 32 | 3,0 | 32 | 1 | L |
| 017220-040X040 | 60,0 | 7,5 | 0,100 | | 36,0 | | 40 | | | 1 | L |
| 017220-050X020 | 70,0 | 22,5 | 0,121 | | 47,5 | | 20 | | | 50 | L |
| 017220-050X025 | 75,0 | 18,0 | 0,131 | | 47,0 | | 25 | | | 50 | 4 |
| 017220-050X032 | 80,0 | 15,0 | 0,145 | 63 | 46,5 | M10 | 32 | 4,0 | 31 | 1 | L |
| 017220-050X040 | 90,0 | 13,0 | 0,160 | | 46,0 | | 40 | | | 1 | L |
| 017220-050X050 | 100,0 | 11,0 | 0,179 | | 45,5 | | 50 | | | 50 | 4 |
| 017220-063X020 | 150,0 | 40,0 | 0,202 | | 60,5 | | 20 | | | 1 | L |
| 017220-063X025 | 160,0 | 37,0 | 0,218 | 63 | 60,0 | M10 | 25 | 4,0 | 31 | 25 | 4 |
| 017220-063X032 | 170,0 | 32,5 | 0,241 | | 59,5 | | 32 | | | 1 | L |
| 017220-063X040 | 180,0 | 28,5 | 0,266 | | 59,0 | | 40 | | | 25 | 4 |
| 017220-063X050 | 200,0 | 25,0 | 0,297 | | 57,5 | | 50 | | | 1 | L |
| 017220-063X063 | 220,0 | 21,0 | 0,337 | 56,0 | 63 | 25 | 4 | | | | |

¹⁾ = packing unit = minimum order quantity

²⁾ = delivery time; L = on stock, 1 = one week, 2 = two weeks, a.s.o.

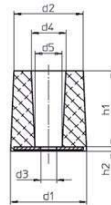
Rubber stop buffer

Buffers for end stops / Cranes and conveyor systems

| Order number | W _{max} [J] | F [kN] | Weight [kg] | d ₁ [mm] | d ₂ [mm] | d ₃ [mm] | h ₁ [mm] | h ₂ [mm] | l [mm] | PE ¹⁾ [pc.] | LZ ²⁾ |
|----------------|-------------------------|-----------|----------------|------------------------|------------------------|------------------------|------------------------|------------------------|-----------|---------------------------|------------------|
| 017220-080X020 | 255,0 | 85,0 | 0,331 | 80 | 77,5 | M12 | 20 | 4,2 | 36 | 1 | L |
| 017220-080X025 | 275,0 | 70,0 | 0,358 | | 77,0 | | 25 | | | 4 | |
| 017220-080X032 | 290,0 | 58,5 | 0,396 | | 76,5 | | 32 | | | 4 | |
| 017220-080X040 | 320,0 | 50,0 | 0,437 | | 76,0 | | 40 | | | 1 | L |
| 017220-080X050 | 350,0 | 42,0 | 0,490 | | 74,5 | | 50 | | | 25 | 4 |
| 017220-080X063 | 390,0 | 34,0 | 0,556 | | 73,0 | | 63 | | | 25 | 4 |
| 017220-080X080 | 450,0 | 27,5 | 0,643 | | 71,5 | | 80 | | | 1 | L |
| 017220-100X020 | 370,0 | 150,0 | 0,506 | | 100 | | 97,5 | | | M12 | 20 |
| 017220-100X025 | 400,0 | 90,0 | 0,549 | 97,0 | | 25 | 10 | 4 | | | |
| 017220-100X032 | 425,0 | 75,0 | 0,609 | 96,5 | | 32 | 10 | 4 | | | |
| 017220-100X040 | 470,0 | 65,0 | 0,676 | 96,0 | | 40 | 10 | 4 | | | |
| 017220-100X050 | 510,0 | 57,5 | 0,760 | 94,5 | | 50 | 1 | L | | | |
| 017220-100X063 | 580,0 | 50,0 | 0,867 | 93,0 | | 63 | 10 | 4 | | | |
| 017220-100X080 | 650,0 | 45,0 | 1,007 | 91,5 | | 80 | 10 | 4 | | | |
| 017220-100X100 | 750,0 | 40,0 | 1,168 | 90,0 | | 100 | 1 | L | | | |

Tolerances of the rubber parts according to ISO 3302-1M3

5.6 Conical rubber buffers with fixing hole



| Order number | W _{max} [J] | F [kN] | Weight [kg] | d ₁ [mm] | d ₂ [mm] | d ₃ [mm] | d ₄ [mm] | d ₅ [mm] | h ₁ | h ₂ [mm] | PE ¹⁾ [pc.] | LZ ²⁾ |
|------------------|-------------------------|-----------|----------------|------------------------|------------------------|------------------------|------------------------|------------------------|----------------|------------------------|---------------------------|------------------|
| 017230-016X008 | 0,9 | 0,6 | 0,004 | 16 | 15,0 | Ø | 10,0 | 9 | 8 | 2,0 | 1 | L |
| 017230-016X010 | 1,0 | 0,5 | 0,005 | | 15,0 | | 10,0 | | | | 100 | 4 |
| 017230-016X012,5 | 1,1 | 0,4 | 0,005 | | 14,5 | | 10,5 | | | | 100 | 4 |
| 017230-016X016 | 1,25 | 0,38 | 0,006 | | 14,0 | | 11,0 | | | | 1 | L |
| 017230-020X010 | 1,6 | 1,1 | 0,008 | 20 | 19,0 | Ø | 12,0 | 11 | 2,1 | 1 | L | |
| 017230-020X012,5 | 1,7 | 0,8 | 0,008 | | 18,5 | | 12,5 | | | 100 | 4 | |
| 017230-020X016 | 1,8 | 0,5 | 0,009 | | 18,0 | | 13,0 | | | 100 | 4 | |
| 017230-020X020 | 1,9 | 0,3 | 0,010 | | 17,5 | | 13,5 | | | 1 | L | |
| 017230-025X010 | 5,9 | 4,5 | 0,014 | 25 | 24,0 | Ø | 12,0 | 11 | 2,1 | 100 | 4 | |
| 017230-025X012,5 | 6,1 | 3,2 | 0,015 | | 23,5 | | 12,5 | | | 100 | 4 | |
| 017230-025X016 | 6,5 | 2,1 | 0,017 | | 23,0 | | 13,0 | | | 100 | 4 | |
| 017230-025X020 | 7,0 | 1,6 | 0,019 | | 22,5 | | 13,5 | | | 100 | 4 | |
| 017230-025X025 | 7,8 | 1,3 | 0,021 | | 22,0 | | 14,0 | | | 1 | L | |
| 017230-032X012,5 | 13,0 | 6,5 | 0,023 | | 31,5 | | 15,5 | | | 12,5 | 100 | 4 |
| 017230-032X016 | 13,5 | 4,4 | 0,025 | 30,0 | 16,0 | 16 | 100 | 4 | | | | |
| 017230-032X020 | 14,0 | 3,1 | 0,028 | 29,5 | 16,5 | 20 | 100 | 4 | | | | |
| 017230-032X025 | 14,5 | 2,5 | 0,032 | 29,0 | 17,0 | 25 | 100 | 4 | | | | |
| 017230-032X032 | 15,0 | 2,0 | 0,037 | 28,5 | 17,5 | 32 | 1 | L | | | | |

¹⁾ = packing unit = minimum order quantity

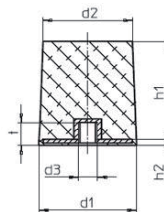
²⁾ = delivery time; L = on stock, 1 = one week, 2 = two weeks, a.s.o.

Rubber stop buffer

Buffers for end stops / Cranes and conveyor systems

| Order number | W _{max} [J] | F [kN] | Weight [kg] | d ₁ [mm] | d ₂ [mm] | d ₃ [mm] | d ₄ [mm] | d ₅ [mm] | h ₁ | h ₂ [mm] | PE ¹⁾ [pc.] | LZ ²⁾ |
|----------------|-------------------------|-----------|----------------|------------------------|------------------------|------------------------|------------------------|------------------------|----------------|------------------------|---------------------------|------------------|
| 017230-040X016 | 34,0 | 14,0 | 0,046 | 40 | 38,0 | Ø 9,4 | 16,0 | 14 | 16 | 2,8 | 100 | 4 |
| 017230-040X020 | 35,0 | 9,0 | 0,051 | | 37,5 | | 16,5 | | 20 | | | |
| 017230-040X025 | 37,0 | 6,5 | 0,057 | | 37,0 | | 17,0 | | 25 | | | |
| 017230-040X032 | 39,5 | 5,1 | 0,063 | | 36,5 | | 17,5 | | 32 | | | |
| 017230-040X040 | 41,0 | 4,9 | 0,071 | | 36,0 | | 18,0 | | 40 | | | |
| 017230-050X020 | 55,0 | 18,0 | 0,078 | 50 | 47,5 | Ø 10,5 | 20,5 | 18 | 20 | 3,0 | 50 | 4 |
| 017230-050X025 | 58,0 | 14,0 | 0,086 | | 47,0 | | 21,0 | | 25 | | | |
| 017230-050X032 | 62,0 | 11,0 | 0,097 | | 46,5 | | 21,5 | | 32 | | | |
| 017230-050X040 | 67,0 | 8,0 | 0,109 | | 46,0 | | 22,0 | | 40 | | | |
| 017230-050X050 | 72,0 | 7,5 | 0,124 | | 45,5 | | 22,5 | | 50 | | | |
| 017230-063X025 | 110,0 | 23,0 | 0,173 | 63 | 60,0 | Ø 10,5 | 21,0 | 18 | 25 | 4 | 25 | 4 |
| 017230-063X032 | 120,0 | 18,0 | 0,193 | | 59,5 | | 21,5 | | 32 | | | |
| 017230-063X040 | 135,0 | 14,0 | 0,215 | | 59,0 | | 22,0 | | 40 | | | |
| 017230-063X050 | 150,0 | 12,0 | 0,243 | | 57,5 | | 23,5 | | 50 | | | |
| 017230-063X063 | 175,0 | 10,0 | 0,277 | | 56,0 | | 25,0 | | 63 | | | |
| 017230-080X025 | 230,0 | 57,0 | 0,282 | 80 | 77,0 | Ø 13,9 | 23,0 | 20 | 25 | 4,2 | 25 | 4 |
| 017230-080X032 | 245,0 | 44,0 | 0,317 | | 76,5 | | 23,5 | | 32 | | | |
| 017230-080X040 | 265,0 | 35,0 | 0,355 | | 76,0 | | 24,0 | | 40 | | | |
| 017230-080X050 | 285,0 | 29,0 | 0,402 | | 74,5 | | 25,5 | | 50 | | | |
| 017230-080X063 | 315,0 | 24,0 | 0,459 | | 73,0 | | 27,0 | | 63 | | | |
| 017230-080X080 | 350,0 | 20,0 | 0,536 | 71,5 | 28,5 | 80 | | | | | | |
| 017230-100X020 | 360,0 | 130,0 | 0,433 | 100 | 97,5 | Ø 13,9 | 22,5 | 20 | 20 | 5,2 | 10 | 4 |
| 017230-100X025 | 380,0 | 90,0 | 0,473 | | 97,0 | | 23,0 | | 25 | | | |
| 017230-100X032 | 410,0 | 75,0 | 0,430 | | 96,5 | | 23,5 | | 32 | | | |
| 017230-100X040 | 440,0 | 65,0 | 0,593 | | 96,0 | | 24,0 | | 40 | | | |
| 017230-100X050 | 470,0 | 55,0 | 0,672 | | 94,5 | | 25,5 | | 50 | | | |
| 017230-100X063 | 520,0 | 45,0 | 0,770 | | 93,0 | | 27,0 | | 63 | | | |
| 017230-100X080 | 575,0 | 37,0 | 0,900 | | 91,5 | | 28,5 | | 80 | | | |
| 017230-100X100 | 650,0 | 30,0 | 1,045 | | 90,0 | | 30,0 | | 100 | | | |

5.7 Conical rubber buffers with internal thread



| Order number | W _{max} [J] | F [kN] | Weight [kg] | d ₁ [mm] | d ₂ [mm] | d ₃ [mm] | h ₁ [mm] | h ₂ [mm] | l [mm] | PE ¹⁾ [pc.] | LZ ²⁾ |
|------------------|-------------------------|-----------|----------------|------------------------|------------------------|------------------------|------------------------|------------------------|-----------|---------------------------|------------------|
| 017240-020X012,5 | 3,8 | 1,5 | 0,015 | 20 | 18,5 | M6 | 12,5 | 2,1 | 7,1 | 1 | L |
| 017240-020X016 | 4,8 | 1,4 | 0,016 | | 18 | | 16,0 | | | 100 | 4 |
| 017240-020X020 | 6,0 | 1,35 | 0,018 | | 17,5 | | 20,0 | | | 1 | L |
| 017240-025X12,5 | 8,0 | 4,0 | 0,023 | 25 | 23,5 | M6 | 12,5 | 2,1 | 7,1 | 100 | 4 |
| 017240-025X016 | 10,0 | 3,5 | 0,025 | | 23,0 | | 16,0 | | | 100 | 4 |
| 017240-025X020 | 12,0 | 3,2 | 0,027 | | 22,5 | | 20,0 | | | 100 | 4 |
| 017240-025X025 | 15,0 | 3,0 | 0,030 | | 22,0 | | 25,0 | | | 1 | L |

¹⁾ = packing unit = minimum order quantity

²⁾ = delivery time; L = on stock, 1 = one week, 2 = two weeks, a.s.o.

Rubber stop buffer

Buffers for end stops / Cranes and conveyor systems

| Order number | W _{max} [J] | F [kN] | Weight [kg] | d ₁ [mm] | d ₂ [mm] | d ₃ [mm] | h ₁ [mm] | h ₂ [mm] | l [mm] | PE ¹⁾ [pc.] | LZ ²⁾ |
|----------------|-------------------------|-----------|----------------|------------------------|------------------------|------------------------|------------------------|------------------------|-----------|---------------------------|------------------|
| 017240-032X016 | 23,0 | 8,8 | 0,039 | 32 | 30,0 | M8 | 16,0 | 2,3 | 9,3 | 100 | 4 |
| 017240-032X020 | 24,0 | 7,0 | 0,043 | | 29,5 | | 20,0 | | | 100 | 4 |
| 017240-032X025 | 25,5 | 5,8 | 0,048 | | 29,0 | | 25,0 | | | 100 | 4 |
| 017240-032X032 | 27,5 | 5,0 | 0,054 | | 28,5 | | 32,0 | | | 1 | L |
| 017240-040X016 | 51,0 | 17,5 | 0,060 | 40 | 38,0 | M8 | 16,0 | 2,8 | 9,3 | 1 | L |
| 017240-040X020 | 53,0 | 13,5 | 0,068 | | 37,5 | | 20,0 | | | 100 | 4 |
| 017240-040X025 | 55,0 | 11,0 | 0,073 | | 37,0 | | 25,0 | | | 100 | 4 |
| 017240-040X032 | 57,5 | 9,0 | 0,081 | | 36,5 | | 32,0 | | | 100 | 4 |
| 017240-040X040 | 60,0 | 7,5 | 0,091 | 36,0 | 40,0 | 1 | L | | | | |
| 017240-050X020 | 70,0 | 22,5 | 0,104 | 50 | 47,5 | M10 | 20,0 | 3,0 | 11,5 | 50 | 4 |
| 017240-050X025 | 75,0 | 18,0 | 0,114 | | 47,0 | | 25,0 | | | 50 | 4 |
| 017240-050X032 | 80,0 | 15,0 | 0,127 | | 46,5 | | 32,0 | | | 50 | 4 |
| 017240-050X040 | 90,0 | 13,0 | 0,142 | | 46,0 | | 40,0 | | | 50 | 4 |
| 017240-050X050 | 100,0 | 11,0 | 0,162 | 45,5 | 50,0 | 1 | L | | | | |
| 017240-063X020 | 150,0 | 40,0 | 0,183 | 63 | 60,5 | M10 | 20,0 | 4,0 | 11,5 | 1 | L |
| 017240-063X025 | 160,0 | 37,0 | 0,199 | | 60,0 | | 25,0 | | | 25 | 4 |
| 017240-063X032 | 170,0 | 32,5 | 0,222 | | 59,5 | | 32,0 | | | 25 | 4 |
| 017240-063X040 | 180,0 | 28,5 | 0,247 | | 59,0 | | 40,0 | | | 25 | 4 |
| 017240-063X050 | 200,0 | 25,0 | 0,278 | 57,5 | 50,0 | 25 | 4 | | | | |
| 017240-063X063 | 220,0 | 21,0 | 0,317 | 56,0 | 63,0 | 1 | L | | | | |
| 017240-080X025 | 275,0 | 70,0 | 0,305 | 80 | 77,0 | M12 | 25,0 | 4,2 | 13,7 | 25 | 4 |
| 017240-080X032 | 290,0 | 58,5 | 0,343 | | 76,5 | | 32,0 | | | 25 | 4 |
| 017240-080X040 | 320,0 | 50,0 | 0,385 | | 76,0 | | 40,0 | | | 25 | 4 |
| 017240-080X050 | 350,0 | 42,0 | 0,437 | | 74,5 | | 50,0 | | | 25 | 4 |
| 017240-080X063 | 390,0 | 34,0 | 0,503 | 73,0 | 63,0 | 25 | 4 | | | | |
| 017240-080X080 | 450,0 | 27,5 | 0,590 | 71,5 | 80,0 | 1 | L | | | | |
| 017240-100X025 | 400,0 | 90,0 | 0,507 | 100 | 97,0 | M12 | 25,0 | 5,2 | 13,7 | 10 | 4 |
| 017240-100X032 | 425,0 | 75,0 | 0,567 | | 96,5 | | 32,0 | | | 10 | 4 |
| 017240-100X040 | 470,0 | 65,0 | 0,634 | | 96,0 | | 40,0 | | | 10 | 4 |
| 017240-100X050 | 510,0 | 57,5 | 0,718 | | 94,5 | | 50,0 | | | 10 | 4 |
| 017240-100X063 | 580,0 | 50,0 | 0,825 | 93,0 | 63,0 | 10 | 4 | | | | |
| 017240-100X080 | 650,0 | 45,0 | 0,965 | 91,5 | 80,0 | 10 | 4 | | | | |
| 017240-100X100 | 750,0 | 40,0 | 1,126 | 90,0 | 100,0 | 1 | L | | | | |

1) = packing unit = minimum order quantity

2) = delivery time; L = on stock, 1 = one week, 2 = two weeks, a.s.o.

6 Example of order details

017220-080x040

